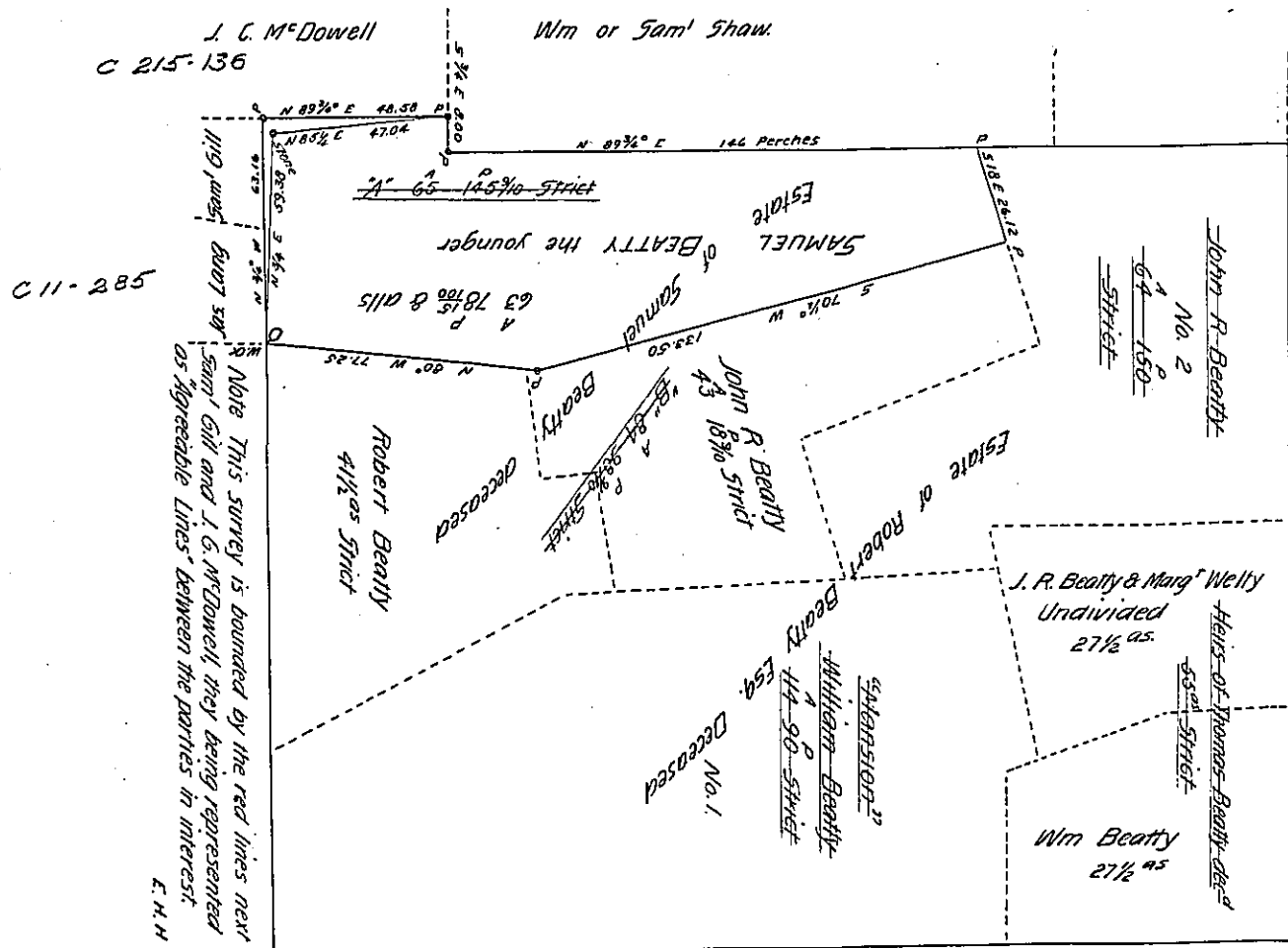


See B 5-67



+These two lines are said by McGill to be agreed lines by the Parents of the present parties E. H. H.

The above draught represents a survey made the 26th October 1863, for Samuel Beatty, containing sixty three acres, seventy eight perches and fifteen one hundredths of a perch, with an allowance proportioned at six per cent. for Roads & Highways; and is situated in Patton township Allegheny county, Pennsylvania. Being part of an original tract of land surveyed the 19th day of April 1770, by Robert McCrea D.S. upon an order or application N^o 2149, dated the 3^d day of April, 1769 then being situated in Bedford County - which contained 322^{as} 5^{ps} & the usual allowance

C.S.

To James P. Barr Esq
Surveyor General
Harrisburg - Pa.

IN TESTIMONY that the above is a copy of the original remaining on file in the Department of Internal Affairs of Pennsylvania, made conformably to an Act of Assembly approved the 16th day of February, 1833, I have hereunto set my Hand and caused the Seal of said Department to be affixed at Harrisburg, this

twenty first day of July 1905

George D. Barr
Secretary of Internal Affairs.